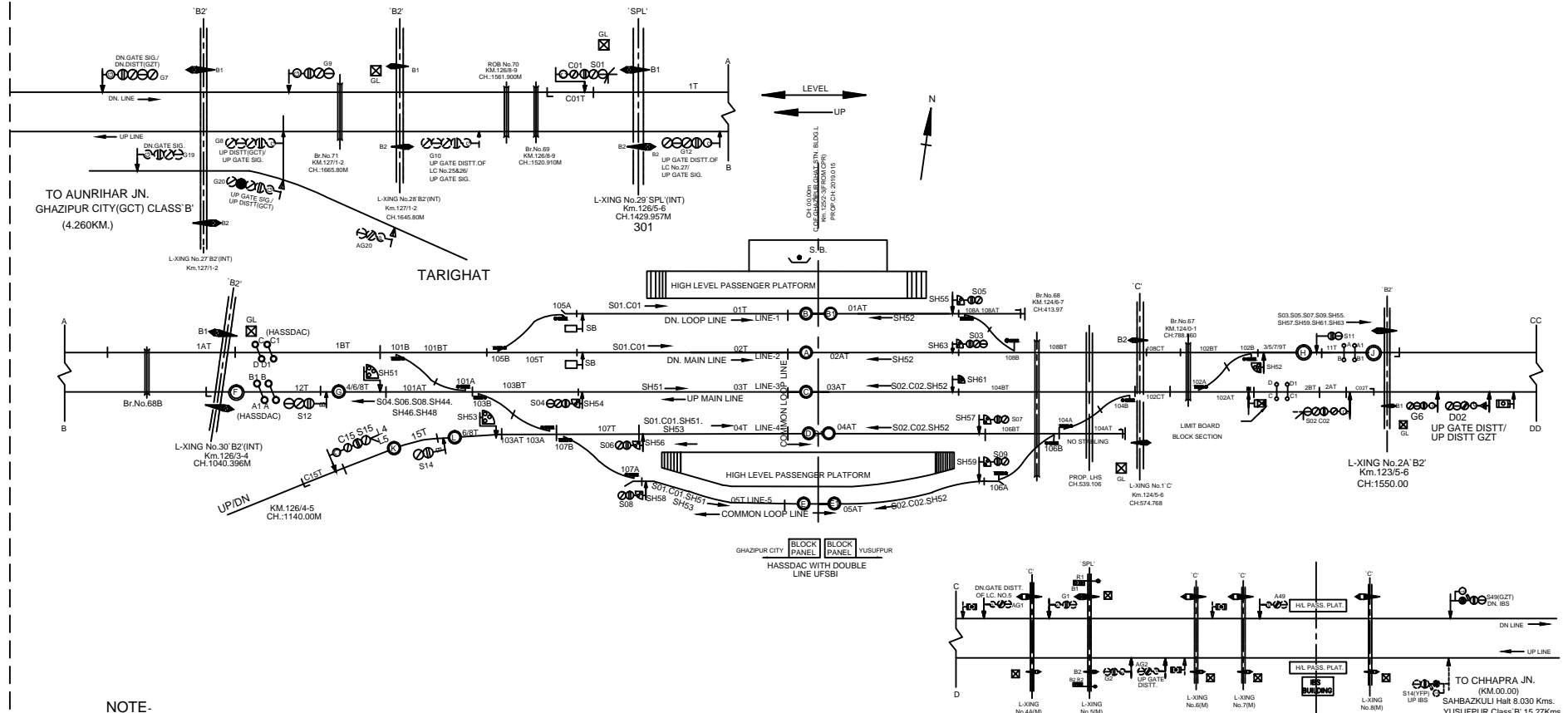


# NORTH EASTERN RAILWAY

# VARANASI DIVISION



**NOTE-**

1. GAUGE - B.G.
  2. CLASS - B
  3. STANDARD OF INTERLOCKING - II WITH III EQUIPMENT
- BLOCK WORKING -**
- i. BLOCK WORKING BY MEANS OF BPAC USING WITH UFSBI (HASSDAC) ON DOUBLE LINE SECTION GHAZIPUR GHAT - GHAZIPUR CITY
  - ii BLOCK WORKING BY MEANS OF BPAC USING WITH UFSBI (HASSDAC) ON DOUBLE LINE SECTION GHAZIPUR GHAT - YUSUFPUR
  - iii BLOCK WORKING BY MEANS OF BPAC USING WITH UFSBI ON SINGLE LINE SECTION GHAZIPUR GHAT - TARIGHAT

NOT TO SCALE    BASED ON R.D. No. Sr.DSTE/BSB/2023 (RD)/192    ALT- 'A'

**MINIATURE PLAN**  
**GHAZIPUR GHAT**  
(GZT)