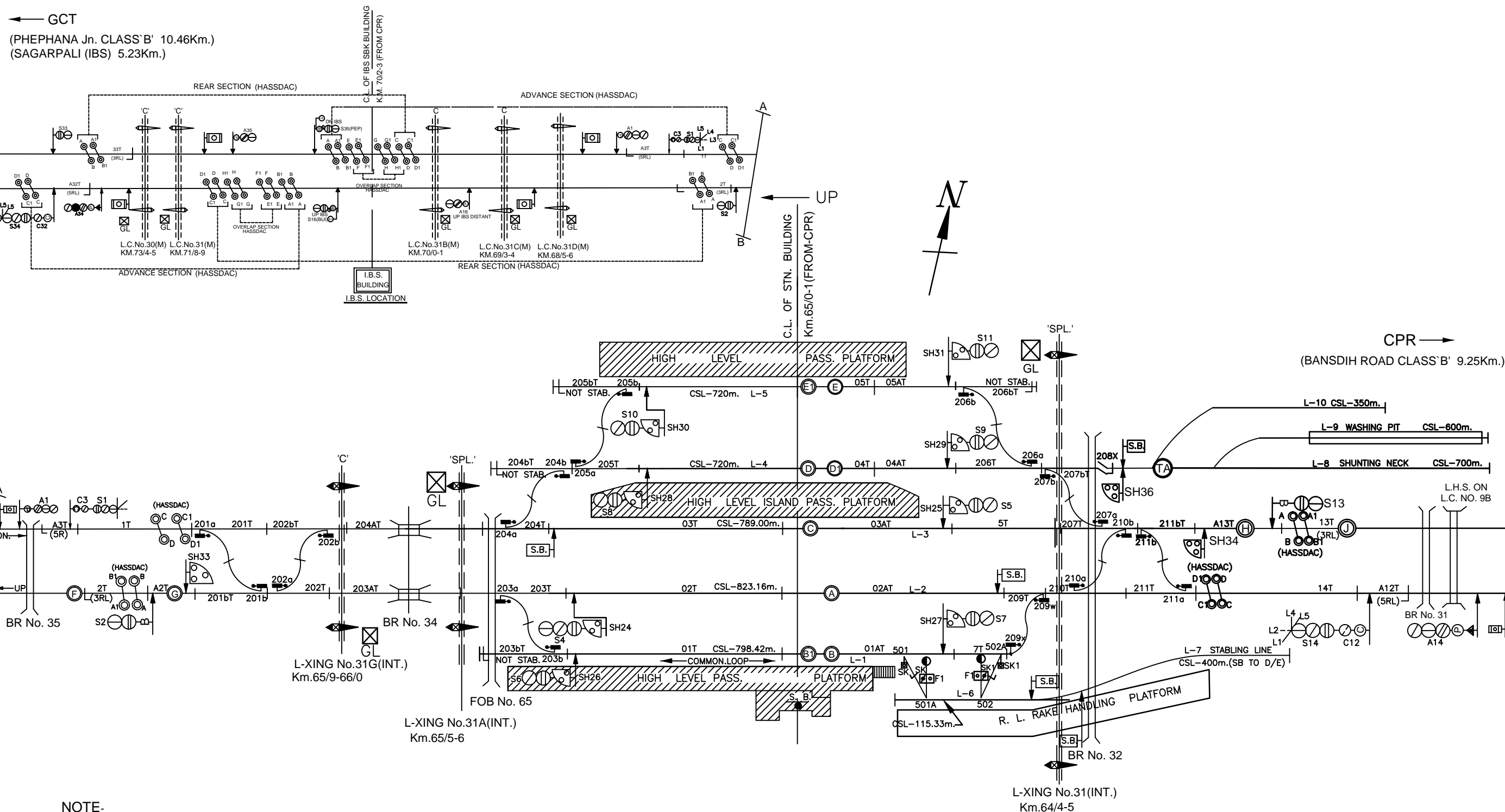


NORTH EASTERN RAILWAY

VARANASI DIVISION



NOTE-
 1. GAUGE - B.G.
 2. CLASS - B
 3. STANDARD OF INTERLOCKING - II (R)
 4. BLOCK WORKING -
 i. BPAC USING BLOCK PANEL WITH UFSBI ON DOUBLE LINE SECTION BALLIA - BANSDIH ROAD
 ii. LOCK & BLOCK INSTT. WITH IBS ON DOUBLE LINE SECTION BALLIA - PHEPHNA Jn.

NOT TO SCALE BASED ON R.D. No. Dy.CSTE /CON./ BSB / 2021(RD) /29 ALT- 'NILL'

MINIATURE PLAN
BALLIA
 (BUI)

PRODUCED BY AN AUTODESK EDUCATIONAL PRODUCT

PRODUCED BY AN AUTODESK EDUCATIONAL PRODUCT