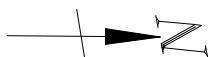
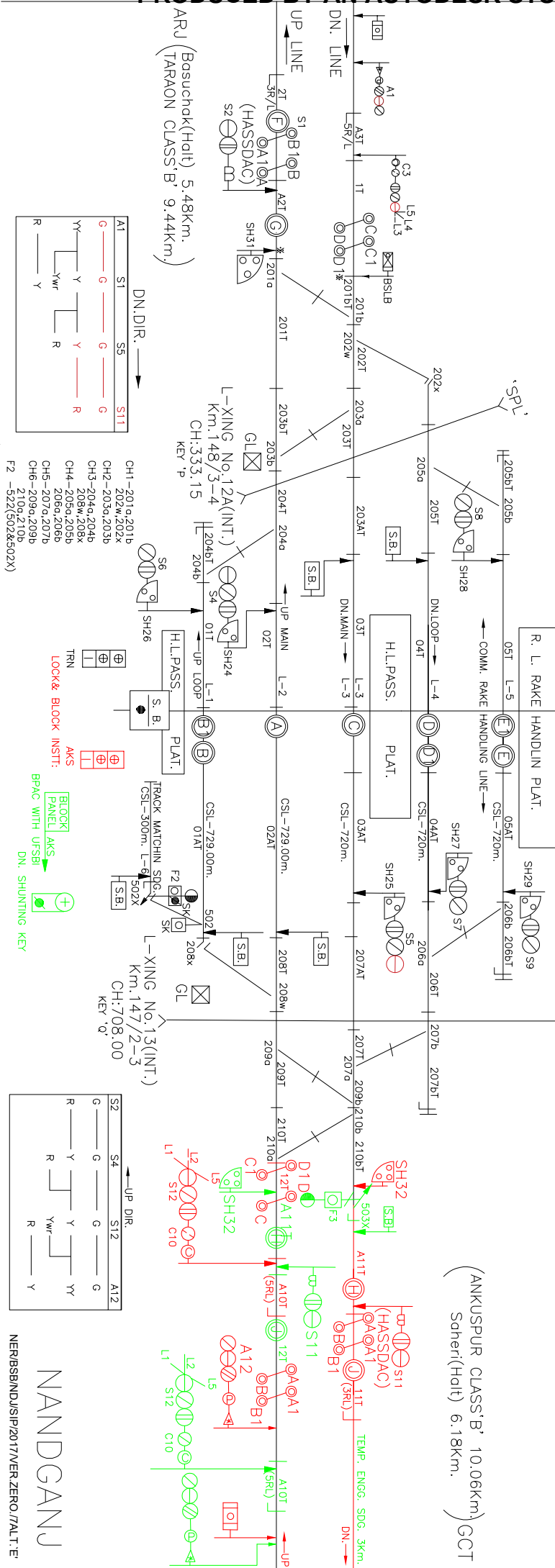


# NANDGANJU



BLOCK WORKING BY LOCK&BLOCK(NDJ-TRN)  
BLOCK WORKING BY LOCK&BLOCK(NDJ-AKS)  
AS ON 017.02.21

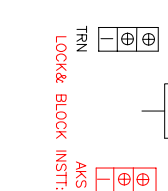
C.L. OF STN. BUILDING  
CH:0.00  
Km. 148/0-1(FROM CPR.)



DN, DIR. →

A1	S1	S5	S11
C	G	G	G
Y	Y	Y	Y
Yw	Yw	Yw	Yw
R	Y	R	R

- CH1-201a,201b
- CH2-202w,202x
- CH3-203a,203b
- CH3-204a,204b
- CH4-205a,205b
- CH5-206a,206b
- CH6-209a,209b
- 210a,210b
- F2-522(502&502X)



← UP DIR.

S2	S4	S12	A12
G	G	G	G
R	Y	Y	Y
R	Yw	Yw	Yw
R	Y	R	Y

NANDGANJU

NER/BSB/NDJ/SP/2017/VER ZERO/7AL.T.E

(ANKUSPUR CLASS'B' 10.06km.) GCT  
Scheri(Halt) 6.18km.)