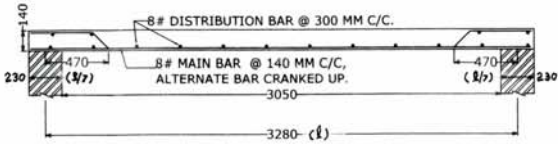
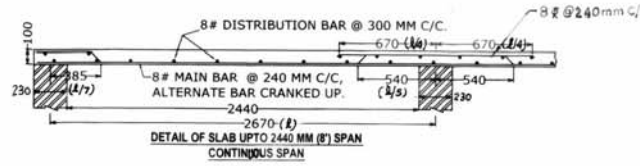


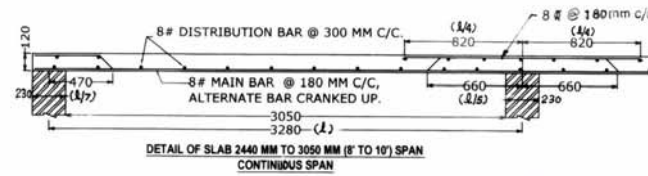
DETAIL OF SLAB UPTO 2440 MM (8') SPAN
SIMPLY SUPPORTED SPAN



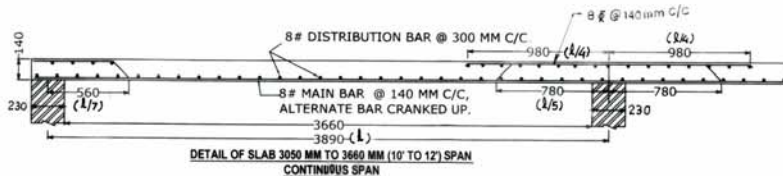
DETAIL OF SLAB BETWEEN 2440 MM TO 3050 MM (8' TO 10') SPAN
SIMPLY SUPPORTED SPAN



DETAIL OF SLAB UPTO 2440 MM (8') SPAN
CONTINUOUS SPAN



DETAIL OF SLAB 2440 MM TO 3050 MM (8' TO 10') SPAN
CONTINUOUS SPAN



DETAIL OF SLAB 3050 MM TO 3660 MM (10' TO 12') SPAN
CONTINUOUS SPAN

NOTE:-

1. ALL DIMENSIONS ARE IN MILLIMETRES.
2. OVERLAP FOR TOR BAR SHOULD BE AS IN TENSION.....56XDIA OF BAR.
3. MINIMUM CLEAR COVER SHALL BE 15 MM.
4. CEMENT CONCRETE SHALL CONFORM TO GRADE M-20 (THE COMPRESSIVE STRENGTH OF CONCRETE SHALL NOT BE LESS THAN 20N/MM2 AFTER 28 DAYS AS PER IS-456-2000).
5. LAPPING OF BARS SHALL BE STAGGERED AND SHALL NOT BE IN PROXIMITY OF THE REGION OF MAXIMUM BENDING MOMENT.
6. THE YIELD STRENGTH OF TOR STEEL SHALL NOT BE LESS THAN 415 N/MM2. ACCORDING TO THE IS-1786.
7. NOT MORE THAN 50% OF BARS SHALL BE SPICED AT ONE SECTION.
8. SLAB SPANNING IN ONE DIRECTION.
9. ALL R.C.C.AND C.C. WORK SHALL CONFORM TO IS:456.

THIS DRAWING SUPERSED C.E'S PLAN NO. 149/VIII/11

| SCHEDULE OF REINFORCEMENT FOR SIMPLY SUPPORTED SLAB REINFORCEMENT | | | | | | |
|---|--------------------------|------------|---------------------|-------------------------------|---------------------------------------|--|
| CLEAR SPAN IN MM | THICKNESS OF SLAB IN MM. | Ø OF # BAR | SPACING @ C/C IN MM | WEIGHT OF MAIN BAR IN Kg/sqm. | WEIGHT OF DISTRIBUTION BAR IN Kg/sqm. | TOTAL WEIGHT OF REINFORCEMENT IN Kg/sqm. |
| UPTO 2440 (8') | 110 | 8 | 220 | 1.80 | 1.40 | 3.20 |
| BET. 2440 - 3050 (8'-10') | 140 | 8 | 140 | 3.00 | 1.30 | 4.30 |

| SCHEDULE OF REINFORCEMENT FOR CONTINEOUS SLAB REINFORCEMENT | | | | | | | |
|---|--------------------------|------------|---------------------|-------------------------------|---------------------------------------|------------------------------|--|
| CLEAR SPAN IN MM | THICKNESS OF SLAB IN MM. | Ø OF # BAR | SPACING @ C/C IN MM | WEIGHT OF MAIN BAR IN Kg/sqm. | WEIGHT OF DISTRIBUTION BAR IN Kg/sqm. | WEIGHT OF TOP BAR IN Kg/sqm. | TOTAL WEIGHT OF REINFORCEMENT IN Kg/sqm. |
| UPTO 2440 (8') | 100 | 8 | 240 | 1.67 | 1.40 | 0.52 | 3.59 |
| BET. 2440 - 3050 (8'-10') | 120 | 8 | 180 | 2.20 | 1.31 | 0.91 | 4.42 |
| BET. 3050 - 3660 (10'-12') | 140 | 8 | 140 | 2.90 | 1.35 | 1.39 | 5.64 |

| | |
|--------------------|--------------------|
| C.P.D.E | <i>[Signature]</i> |
| DY.C.E.(P&D) | <i>[Signature]</i> |
| XEN / DESIGN | <i>[Signature]</i> |
| AXEN/JPL | <i>[Signature]</i> |
| DESIGNATION | SIGNATURE |

| | |
|---|------------------------|
| C E'S PLAN NO. | GML1-2013 Z-912.012 |
| <i>North Eastern Railway</i> Head Quarter Office | |
| TYPE PLAN STRUCTURAL DETAIL OF R.C.C. SLAB FOR VARIOUS SPAN. | |

| | | | | | |
|-----------------------------|---|---|---|--|---|
| REGISTER NO. TP/12-13/01 | <i>[Signature]</i> SUNIL KUMAR SRIVASTAV J.E./BLDG. (PREPARED BY) | <i>[Signature]</i> M. N. PRAJAPATI S.S.E./BLDG. | <i>[Signature]</i> MAHENDRA NATH S.S.E./DRG./INCH | <i>[Signature]</i> SANJAI SRIVASTAV S.S.E./DESIGN. | <i>[Signature]</i> N.K.PATHAK S.S.E./DESIGN |
|-----------------------------|---|---|---|--|---|

| | |
|---------------|---------------------------|
| SCALE | NOT TO SCALE |
| CE'S CASE NO. | W/22/BUILDING/T.P./DESIGN |